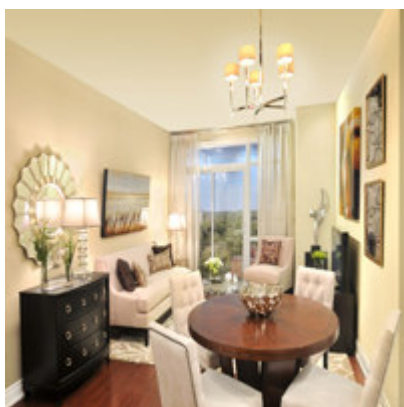


Model Suite Captures the Charm of Markham Village

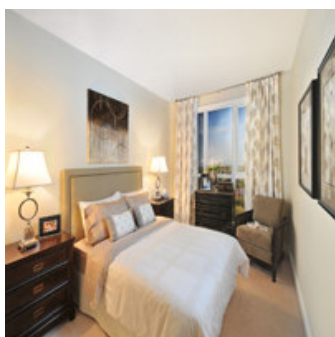
December 22, 2010



At [Sierra Building Group's](#) phenomenally successful 68 Main Street Condominiums in Markham Village, the model suite appointed by Flora Di Menna Designs captures the ambience and charm of the area. Within minutes, residents will be able to access a wealth of modern shops and services in this quaint section of town where Victorian buildings, interlocking brick sidewalks and gaslight lamps line the street. "Like the architecture of the condominium itself, the model at [68 Main Street Condominiums](#) is contemporary with touches of traditional," Flora Di Menna says. "Buyers of all ages are attracted to this building, and the model accommodates a variety of lifestyles."

Dark hardwood flooring anchors Ms. Di Menna's palette of taupe cream walls to create a cosy, calming feel to the suite. The entire design is grounded in nature. "This earthy look is created with landscape themes for the accessories such as the living/dining room area rug with a pattern of large leaves," she says. "Two throw cushions are the colour of rich earth, and the others have floral patterns. The lacquered finish artwork includes a painting with gently blowing wheat sheafs, and the dining room centerpiece is crafted from sterling leaves. The upholstery on the dining and living room chairs is light and contemporary, and the sideboard dresser serves double duty as an end table and dining hutch. It is perfect for storing linens and more, and makes for an excellent use of space."

Equally as stunning, the kitchen carries through the earthy feel with dark cabinets set off by the brown/grey/taupe granite countertop. "We chose a light subway tile backsplash for a touch of modern," Di Menna says, "and the light over the island has the birdcage look of an older light, yet has a shade. This marriage of the old and new is perfect in the setting." In the alcove off the main living area, the den features a desk and accessories that mirror the nature theme. "We added a beautiful cityscape as well," Di Menna explains, "as some of these buyers will work downtown."



Both bedrooms are done in the same neutral colour palette to keep them light and calming, and each is accentuated with silk and linen drapery in a bold leaf pattern. The variety of textures that create visual interest and a warm feeling include fabric headboards with nail heads around the borders, reminiscent of a fine leather chair. "The master bedroom shows the

versatility of the space," she adds. "The chest of drawers is placed in front of the window – something we seldom see, but it is an excellent use of space. In addition, the bedside tables complement, but do not match the dresser. It's a harmonious, yet eclectic look." The master ensuite continues the theme with a luxurious sunken corner tub, glass shower, dark vanity cabinetry with marble countertop, and light tiles. "This is a lovely haven of relaxation."

[68 Main Street Condominiums](#) adds a stunning residential component to the exciting revitalization of Markham Village. The building's cutting-edge architecture features traditional elements of brick and stone, and steps back at the fourth storey to create large terraces and make way for another two storeys.

There will be 13,000 square feet of new retail space on the ground level with retail stores, a private piazza-style Old World courtyard with a cobblestone walkway and pergola, and a café with an outdoor patio. Residents can access concierge service from the sophisticated lobby. Amenities extend to the Fitness Centre with state-of-the-art facilities, the technologically advanced Media/Club Room, and the rooftop terrace with Japanese-inspired gardens and gas barbecue stations. 68 Main Street is being constructed to LEED® standards, and will feature auto-share vehicles in the building. For those who prefer to use public transportation, the GO Station is only a five-minute walk, and residents can be in downtown Toronto in half an hour.

Choices include one-bedroom, one-bedroom + den, two-bedroom, two-bedroom + den and three-bedroom suites priced from the mid-\$200s to over \$1 million. Visit SOON, and be sure to ask a Sales Representative about the amazing limited-time Holiday Purchaser Incentive!

Sierra's 3,000 sq. ft. Presentation Centre with the must-see model suite is on the west side of Highway 48, north of Highway 7. Call 905-305-0822 or [visit www.68mainstreet.ca](http://www.68mainstreet.ca).